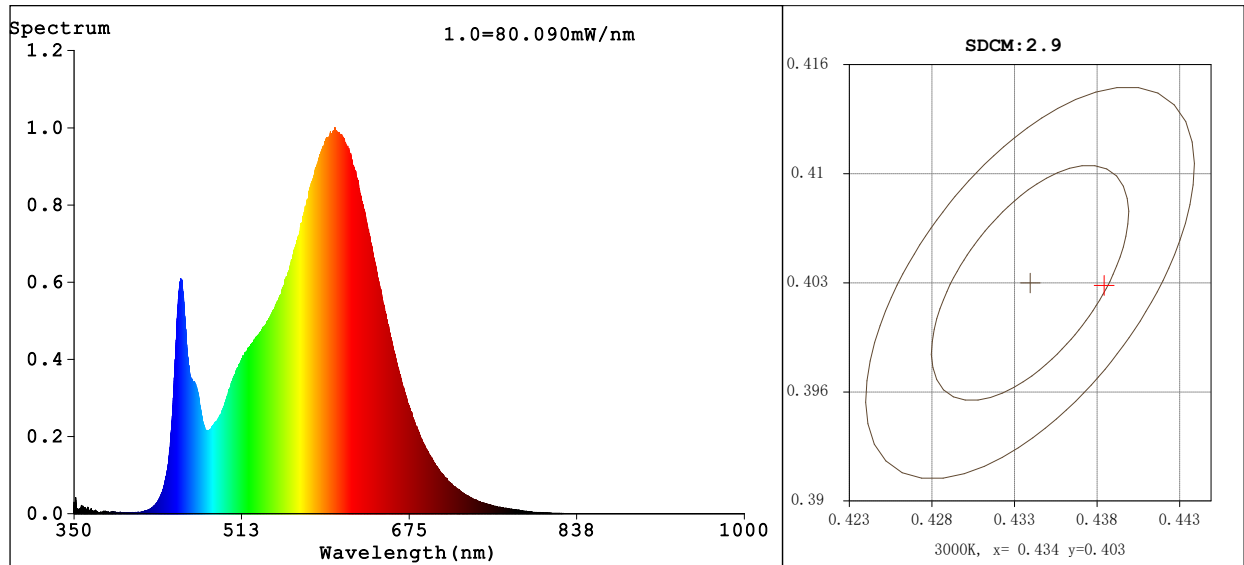


Spectrum Test Report



Color Parameters:

Chromaticity Coordinate: $x=0.4383$ $y=0.4028$ / $u'=0.2520$ $v'=0.5211$
 CCT=2967K (Duv=-0.0007) Dominant WL:Ld =583.2nm WL:Lc = --nm Purity=52.5%
 Ratio:R=23.2% G=74.0% B=2.8% Peak WL:Lp=603.0nm FWHM=116.0nm
 Render Index:Ra=82.0 AvgR=76.6 TM30:Rf=83 Rg=94

R1 =81 R2 =93 R3 =93 R4 =79 R5 =82 R6 =92 R7 =80
 R8 =56 R9 =3 R10=85 R11=79 R12=72 R13=84 R14=97 R15=73

Photo Parameters:

Flux = 3772 lm Eff. : 134.88 lm/W Fe = 11.40 W
 Scotopic:5138.3 S/P:1.3621

Electrical parameters:

V = 231.24 V I = 0.1240 A P = 27.97 W PF = 0.9757

Kdisp(IEC) = 0.9947

LEVEL:OUT WHITE:ANSI_3000K

Status: Integral T = 95 ms Ip = 55843 (85%)

GBT5702

Ra = 82

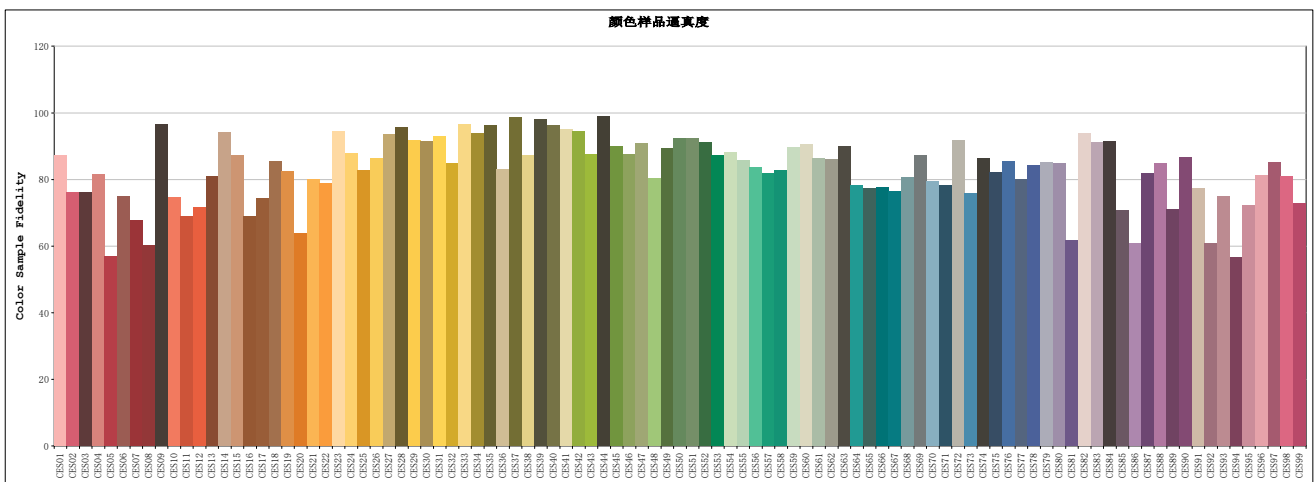
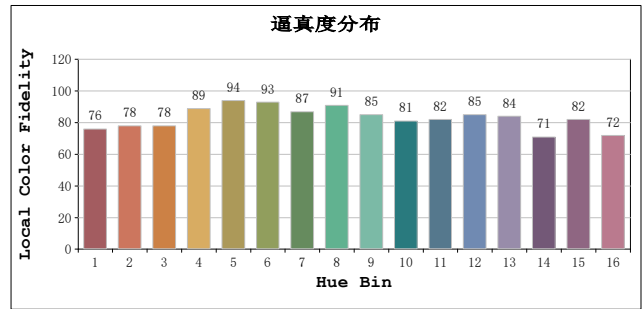
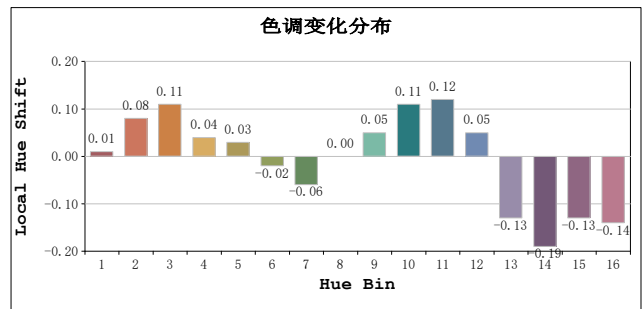
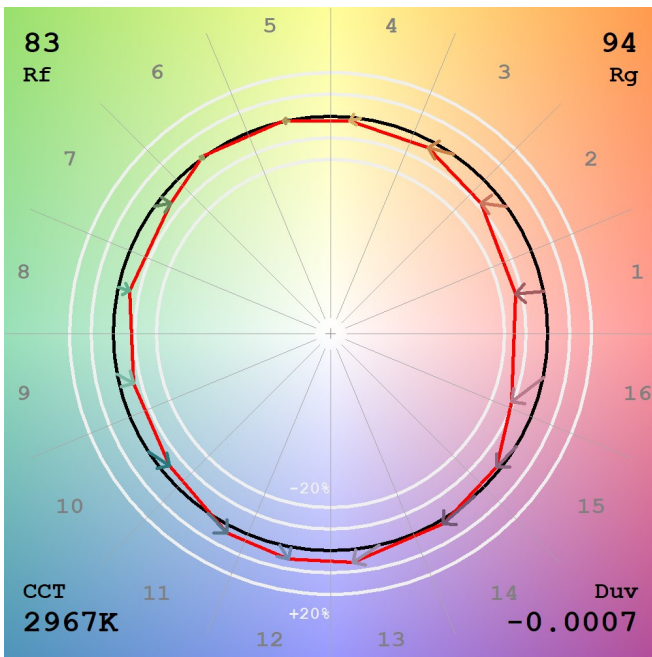
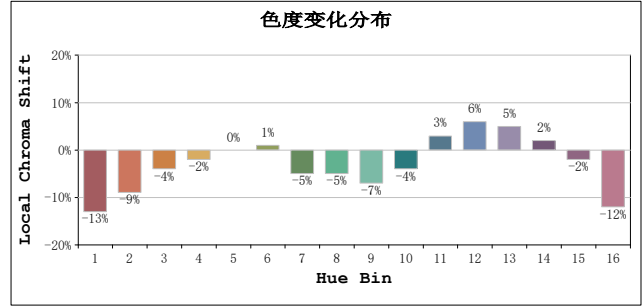
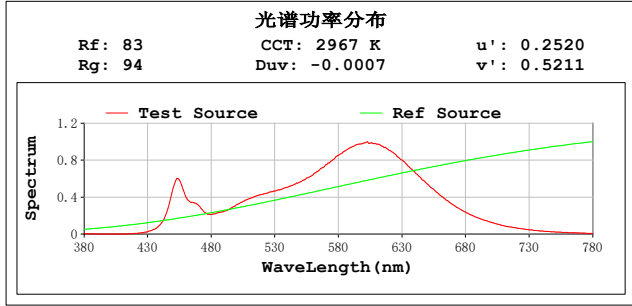
Ga = 0.91

Model:
 Tester:
 Temperature:25.3Deg
 Manufacturer:

Number:214
 Date:2025-05-23 15:09:29
 Humidity:65.0%
 Remarks:

TM30

视场角:2 度



Model:
 Tester:
 Temperature:25.3Deg
 Manufacturer:

Number:214
 Date:2025-05-23 15:09:29
 Humidity:65.0%
 Remarks: